



MIDDLE SCHOOL UPDATE

Information from Sue Denny, Tonya Merrigan,
Elizabeth Parks



- 9 Buildings
- Range of 450 – 715 Students
- 5,400 Students
- 8 class periods per day
- 5 core classes
- Exploratory Classes: 6th grade wheel, 7th & 8th electives

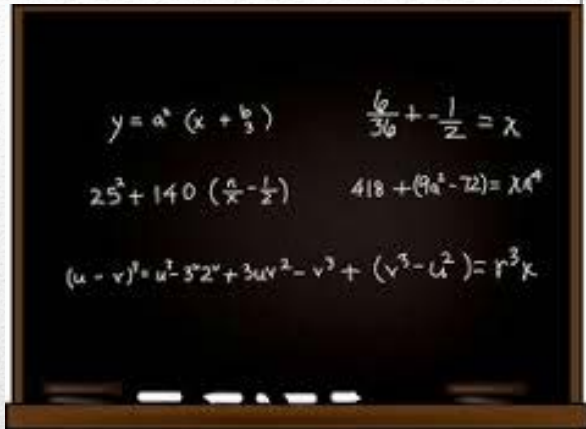
Middle School

Grades 6 - 8



- All Middle School Math Classrooms will have an interactive SMART board beginning in the fall of 2014

Technology Update



- Class names will remain the same
- Extra 25% content added per year to + classes
- Ability to move between regular class and + class remains the same

Math+ Content Difference Starting Fall 2014



- Data from 2007, 2010, 2013
- Middle School Survey
- Same survey to Students, Parents, Teachers
- 10 Questions
- High School Sophomores also surveyed

Surveys

MIDDLE SCHOOL

| | Parents | Teachers | Students |
|---------|---------|----------|----------|
| 2007 | 66 | 89 | 80 |
| 2010 | 88 | 96 | 82 |
| 2013 | 58 | 95 | 70 |
| Average | 70% | 93% | 77% |

Survey Question: Provide individual academic support...

PARENTS

| Parents | 2007 | 2010 | 2013 |
|----------------|------|------|------|
| Reading | 64 | 69 | 72 |
| Math | 70 | 78 | 72 |
| Science | 62 | 72 | 65 |
| Social Studies | 57 | 66 | 66 |
| Comm Arts/ | 66 | 70 | 74 |
| Average | 64% | 71% | 70% |

Survey Question: The curriculum is challenging and engages students...

TEACHERS

| Teachers | 2007 | 2010 | 2013 |
|----------------|------|------|------|
| Reading | 72 | 84 | 85 |
| Math | 70 | 87 | 86 |
| Science | 76 | 84 | 84 |
| Social Studies | 79 | 87 | 86 |
| Comm Arts/ | 79 | 85 | 85 |
| Average | 75% | 85% | 85% |

Survey Question: The curriculum is challenging and engages my student...

STUDENTS

| Students | 2007 | 2010 | 2013 |
|----------------|------|------|------|
| Reading | 26 | 36 | 33 |
| Math | 42 | 49 | 50 |
| Science | 35 | 41 | 37 |
| Social Studies | 37 | 41 | 36 |
| Comm Arts/ | 30 | 39 | 34 |
| Average | 34% | 41% | 38% |

Survey Question: The curriculum is challenging for me...

HIGH SCHOOL
SOPHOMORES

| Students | 2007 | 2010 | 2013 |
|-------------------|------|------|------|
| Reading | 69 | | 71 |
| Math | 69 | | 64 |
| Science | 64 | | 64 |
| Social Studies | 67 | | 59 |
| Comm Arts/ | 48 | | 69 |
| Average | 63% | | 65% |

Sophomore Survey Question:
The curriculum
appropriately prepared me...

% of Students at 75 Percentile and Above

| Grade | Math | Reading |
|--------------|-------------|----------------|
| 6 | 46.5 | 46.2 |
| 7 | 48.2 | 51.0 |
| 8 | 53.1 | 54.5 |

Our students scores well above national average.

Spring 2013 MAP testing

- Use survey & achievement data to adjust programming at district and building levels
- Continue standards implementation
- District office study group for benchmarking

Looking Ahead at Middle School
